

A solid red teardrop-shaped graphic, oriented vertically with the point at the bottom, positioned to the left of the word 'Portfolio'.

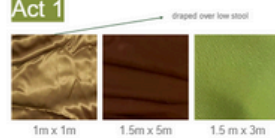
Portfolio

Amina Pagliari

Set Design for Short Film - The Colours of Henna

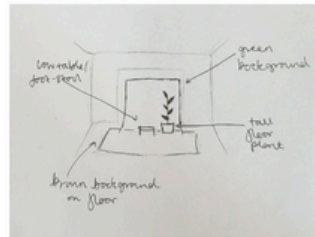
The Colours of Henna - Set design

Act 1



Objects

- Low foot stool/table
- Wooden board for powder shot
- Wooden Bowl
- Spoon
- Small henna plant?
- Henna powder & any other ingredients needed



Equipment

- Backdrop stand x1
- Sand bags
- Backdrop clamps
- Paper towel



The Colours of Henna - Set design

Act 2

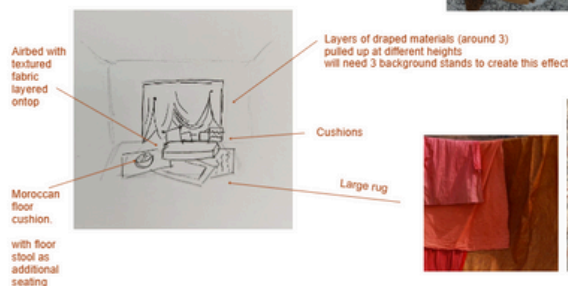


Objects

- Low foot stool/table from act 1
- Moroccan floor cushion
- Air bed
- Cushions
- 3 rugs
- Tray(s) to hold henna cones

Materials:

- Twine to tie the material to create draping effect
- Pegs

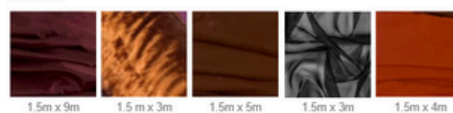


Equipment

- Backdrop stands x4
- Sand bags
- Lots of backdrop clamps
- Paper towel

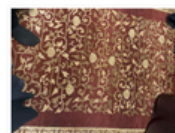
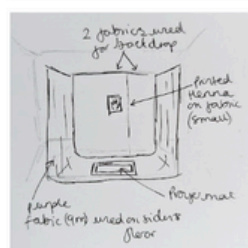
The Colours of Henna - Set design

Act 3



Objects

- Small mat with hand print
- 3 Rugs
- 1 special art rug
- Painted henna hand on purple fabric
- sheer black fabric



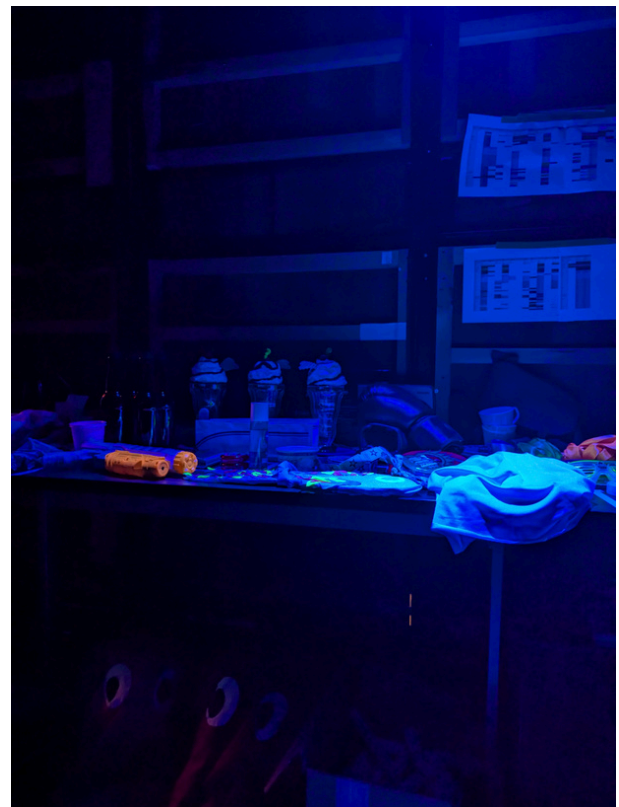
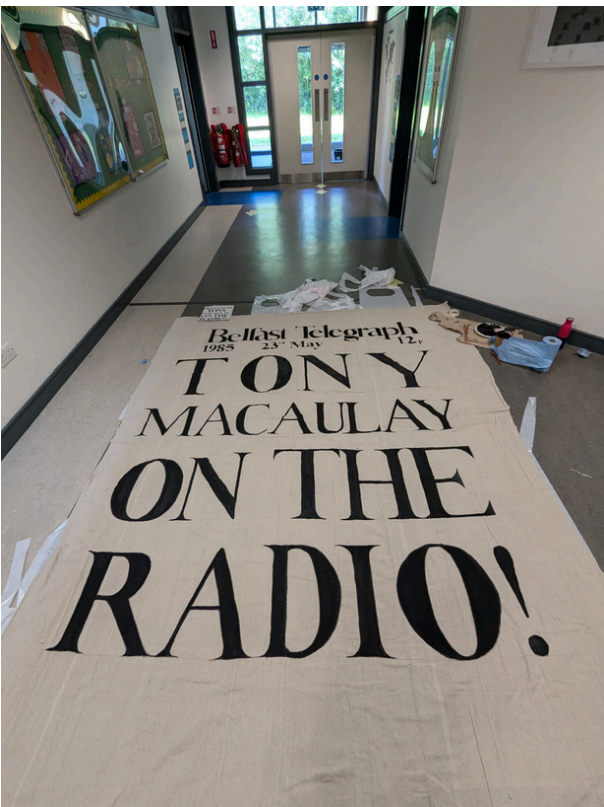
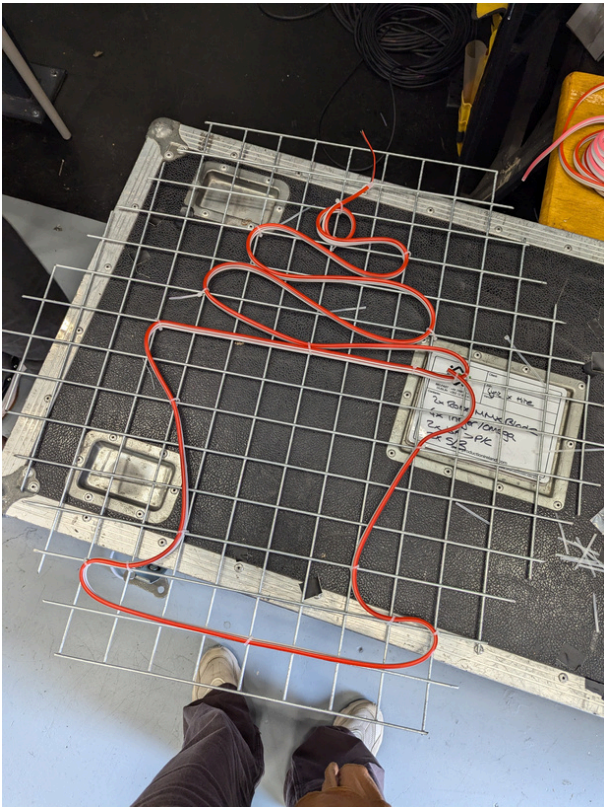
Equipment

- Backdrop stands x4
- Sand bags
- Lots of backdrop clamps



Amina Pagliari

Set Design (assistant) - BYMT Belfast theatre production of *All grown up*





Set Design - Fashion student final collection look book

Description:

- Large pale cream sheet safety pinned in certain areas to create draped look
- White or blue or pink lace bows attached to areas that have been safety pinned
- Lace in subtle colours not to stand out too much.
- Newspaper and red rose prop



Object/materials list

- 150 x 4 meter cream fabric x2
- Light blue/white/light pink lace
- Newspaper (Amina)
- safety pins (Amina)
- Red Rose (Amina)

Equipment

- Backdrop pegs x8
- Backdrop stand x1
- Lighting equipment



Description:

- Large deep red backdrop sheet
- Red roses hanging down from top with invisible string
- Red rug (optional)

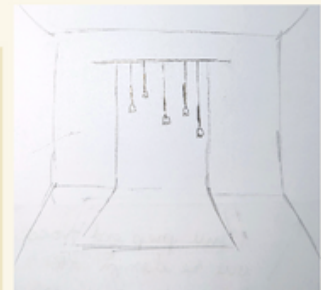


Object/materials list

- Dark red backdrop/fabric
- Bunch of dark red roses (Amina)
- Fishing wire (invisible string) (Amina)
- Needle (Amina)
- Pegs (Amina)
- Rug (optional)

Equipment

- Backdrop pegs x8
- Backdrop stand x1
- Lighting equipment





Amina Pagliari

Set Design - Shoot for artist's single cover





Amina Pagliari

Set Design - Shoot for The British Bengala Welfare Trust

Colour palette



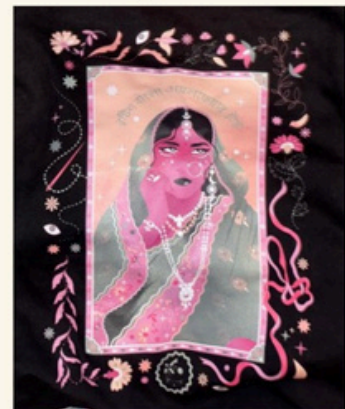
Inspo images



Fabrics

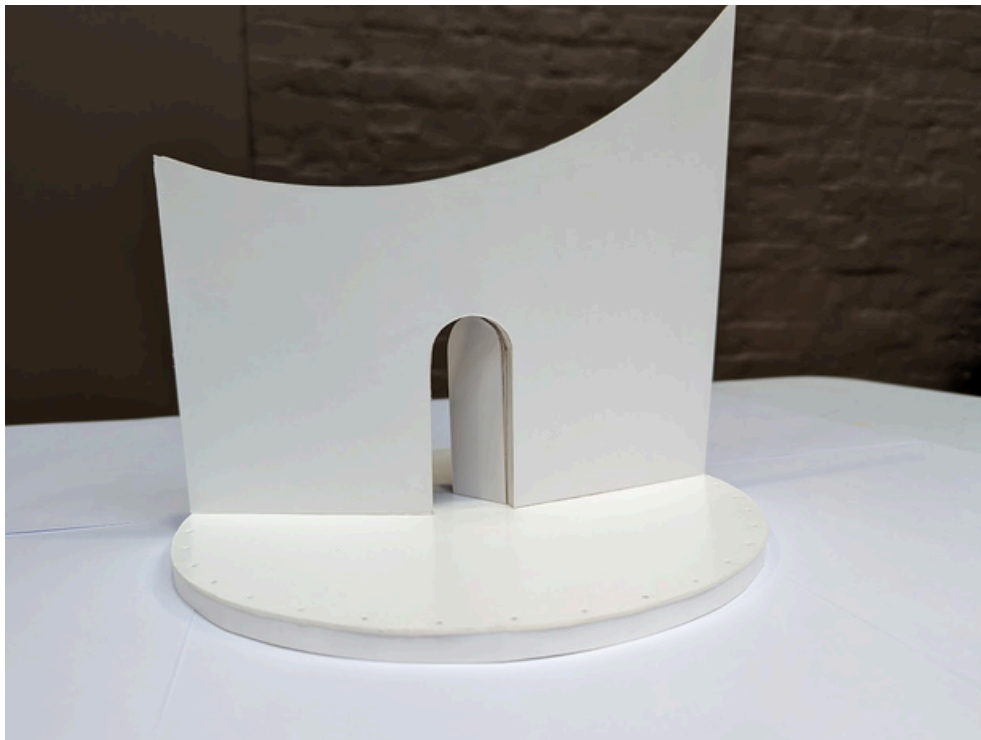


T-shirt designs





Set Design - Conceptual design for play Machinal at Old Vic theatre

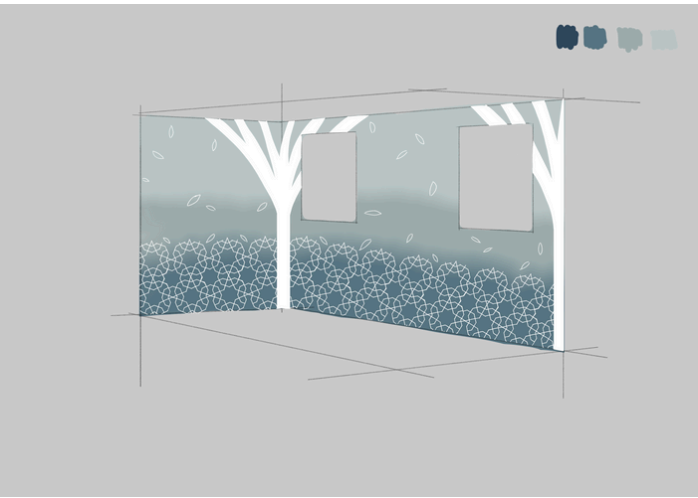
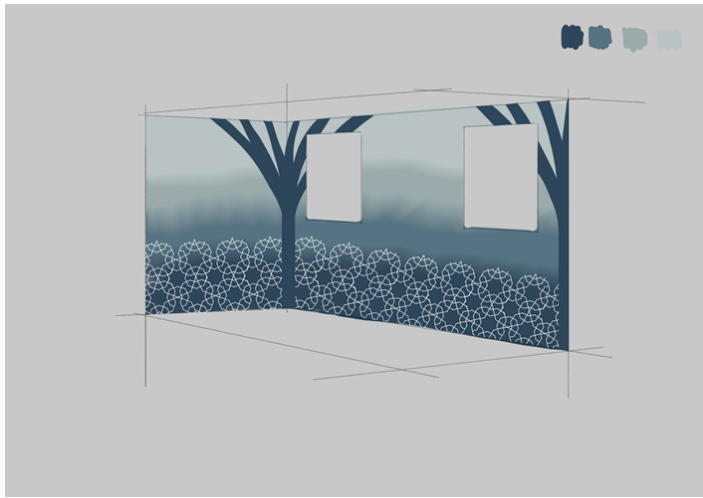
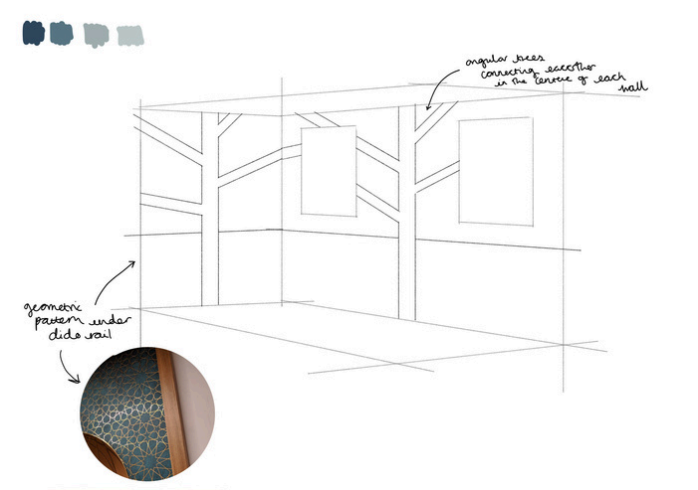
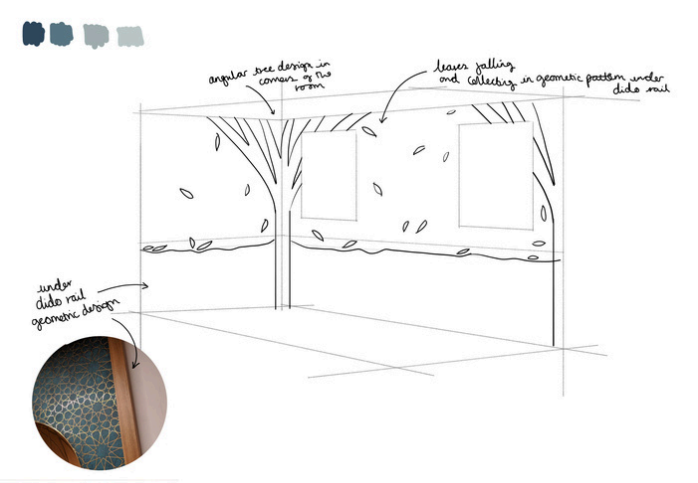


Curation - The Bedford River Project exhibition





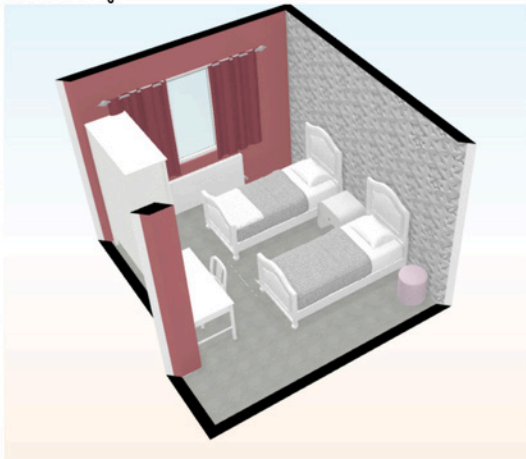
Bedford Creative Arts – Designing and painting mural in Community centre prayer room



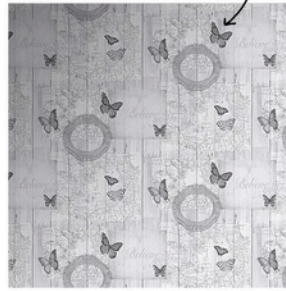


Carers in Bedfordshire – Interior designing young carers' bedroom

3D rendering



lots of butterflies

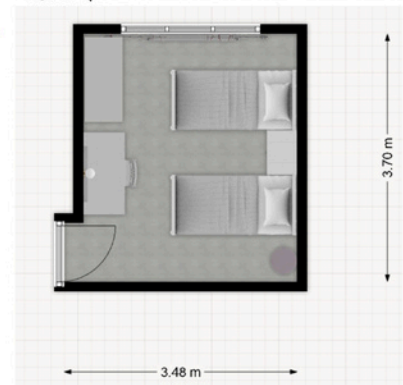


colour swatches

- elegant
- chic
- french
- princess style



Room plan



princess canopies



LOTS OF PINK



Free SD floor

