

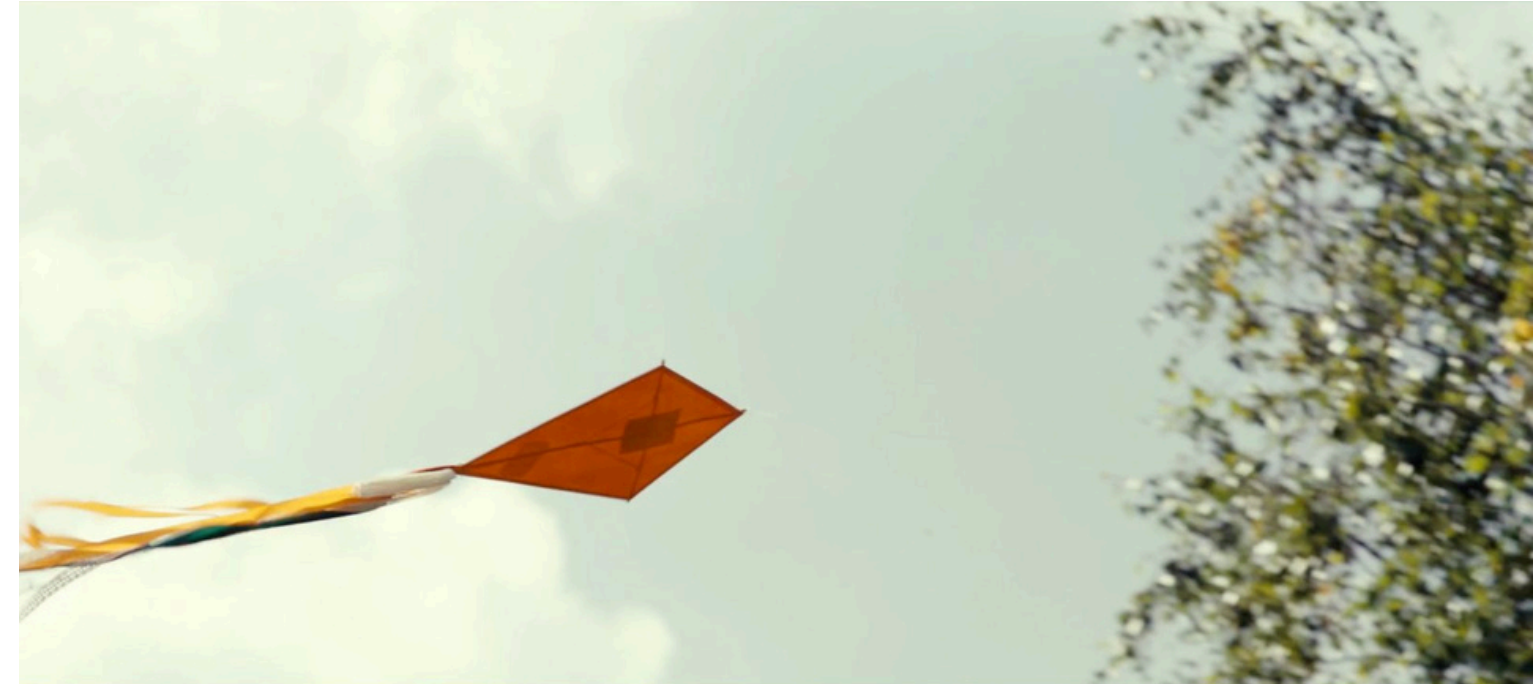
A large, solid red teardrop-shaped graphic that tapers to a point at the bottom. It is positioned to the left of the word 'PORTFOLIO', with the letter 'P' partially overlapping its right edge.

PORTFOLIO

Amina Pagliari

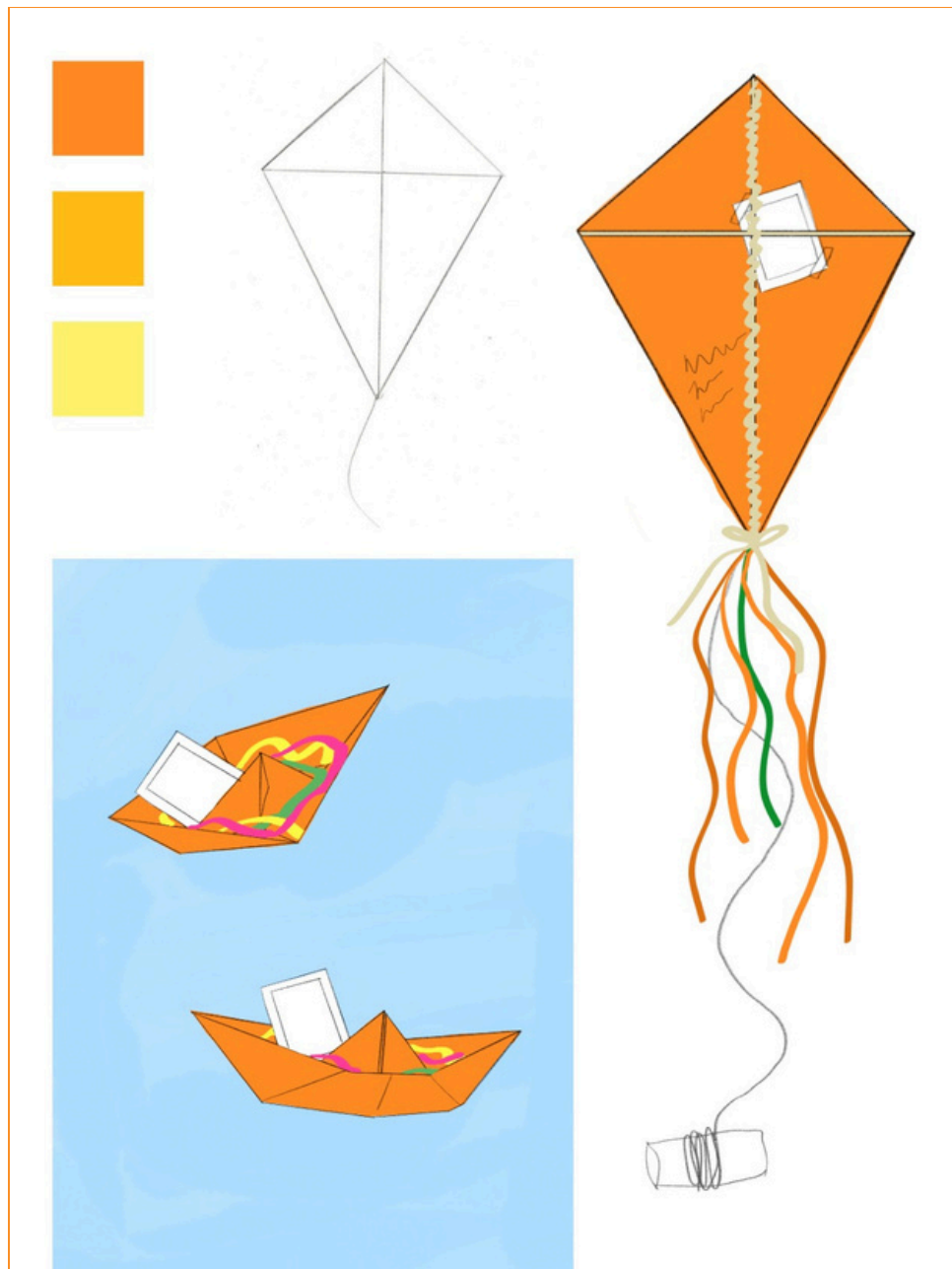
SHORT FILM: TO FLY OR FLOAT

Role: Art department assistant, Set dresser, Stanby props & Prop maker



SHORT FILM: TO FLY OR FLOAT

Hero Prop making process



SHORT FILM: NOCTURNAL

Role: Production & Costume designer



SHORT FILM: NOCTURNAL

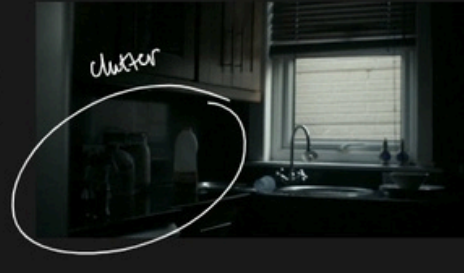
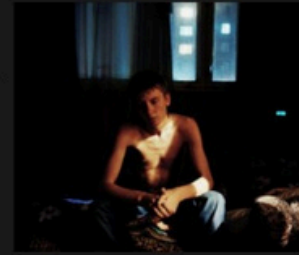
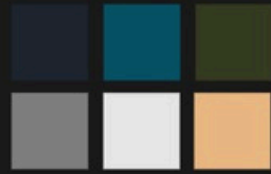
Role: Production & Costume designer



SHORT FILM: NOCTURNAL

Role: Production & Costume designer

House set image references



Notes:

- House set feels empty - symbolic of Ray being away from his family.
- Plain sheets, dull tones
- Reinforce idea that the house is not a home and is temporary
- Lighting/windows bring in the warmth, mirroring the facetime call with Ray's wife
- Blue tones evoke sadness
- Kitchen is cluttered but gives a sense of found family while cooking.

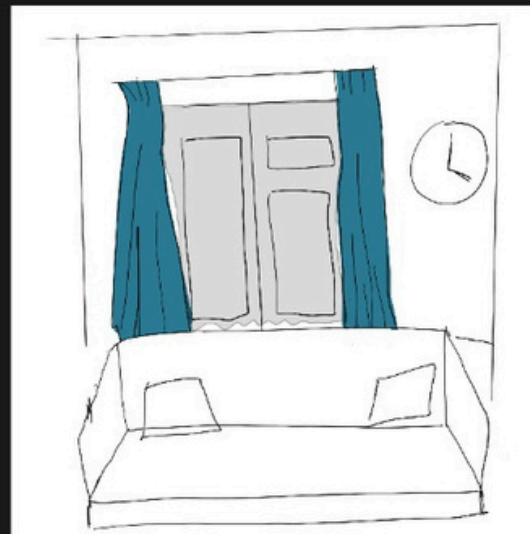
Rachel Chinouriri - The Hills https://youtu.be/G5IKmUw_Vxs?si=BPdGd8i6fudJDBr

Hak Baker - Nameless https://www.youtube.com/watch?v=nPUvN_Osmno

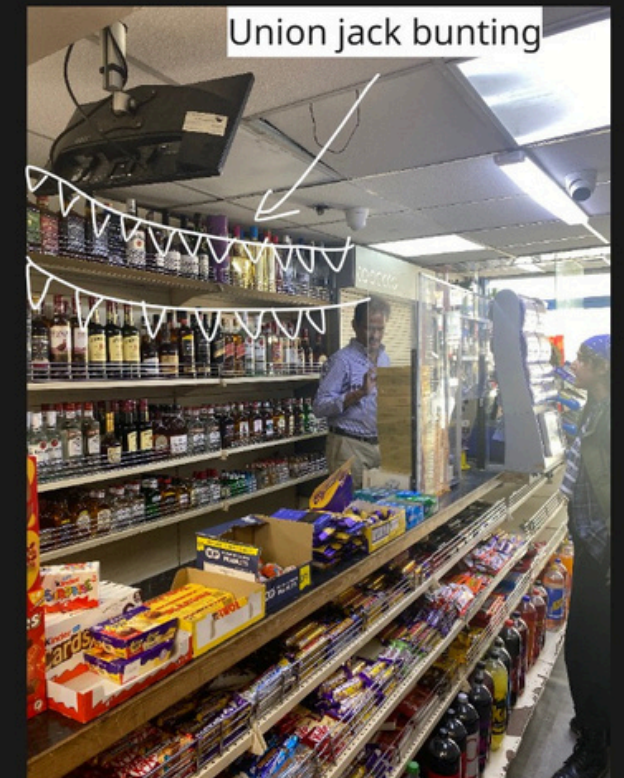


Lace voile net curtain

Beaded curtain at entrance to kitchen



Corner shop image references



Union jack bunting

PERFORMANCE: YIMIKA

Role: Performance designer & scenic painter



PERFORMANCE: YIMIKA

Role: Performance designer & scenic painter



SHORT FILM: THE COLOURS OF HENNA

Role: Production designer



SHORT FILM: THE COLOURS OF HENNA

Role: Production designer



SHORT FILM: THE COLOURS OF HENNA

Role: Production designer

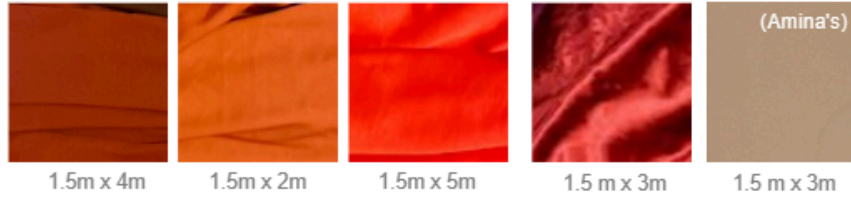


SHORT FILM: THE COLOURS OF HENNA

Role: Production designer

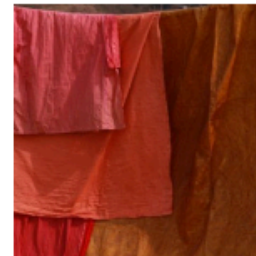
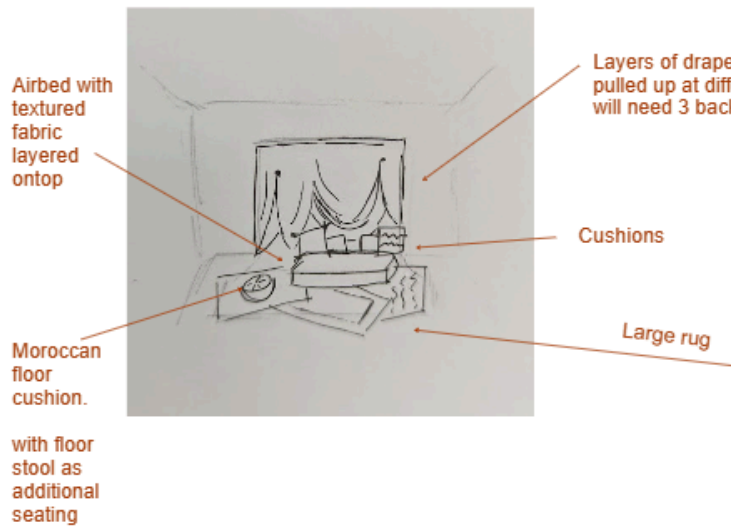
The Colours of Henna - Set design

Act 2



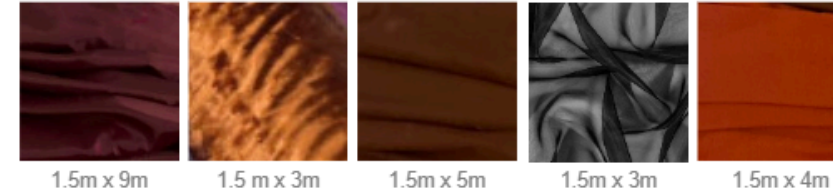
Equipment
Backdrop stands x4
Sand bags
Lots of backdrop clamps
Paper towel

- Objects**
- Low foot stool/table from act 1
 - Moroccan floor cushion
 - Air bed
 - Cushions
 - 3 rugs
 - Tray(s) to hold henna cones
- Materials:**
- Twine to tie material to create draping effect
 - Pegs

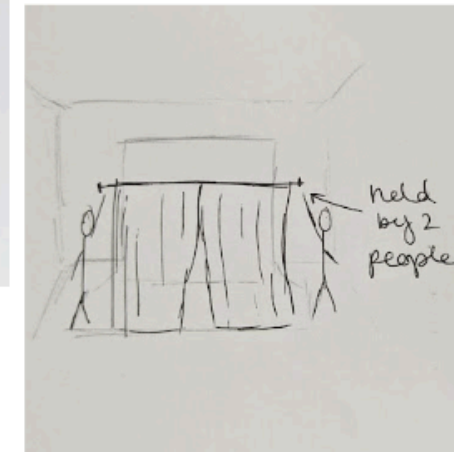
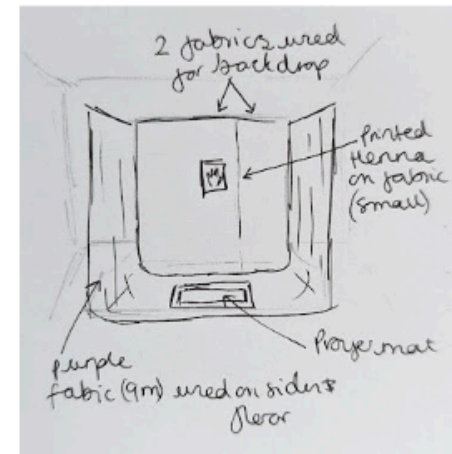


The Colours of Henna - Set design

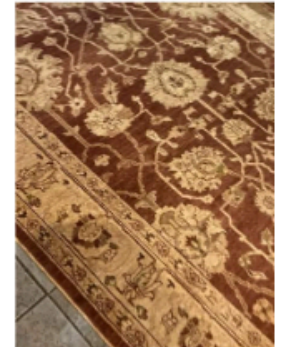
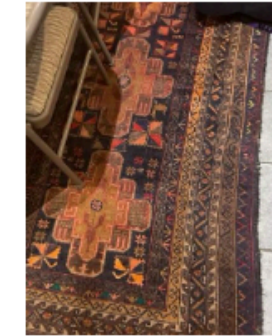
Act 3



- Objects**
- Small mat with hand print
 - 3 Rugs
 - 1 special art rug
 - Painted henna hand on purple fabric
 - sheer black fabric



Equipment
Backdrop stands x4
Sand bags
Lots of backdrop clamps



SHORT FILM: A TASTE OF MERCURY (UNRELEASED)

Role: Production designer & Prop maker



SHORT FILM: A TASTE OF MERCURY (UNRELEASED)

Role: Production designer & Prop maker



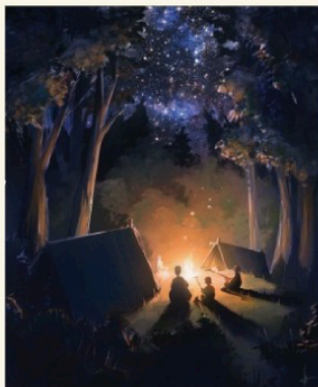
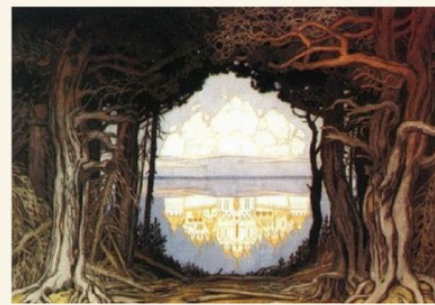
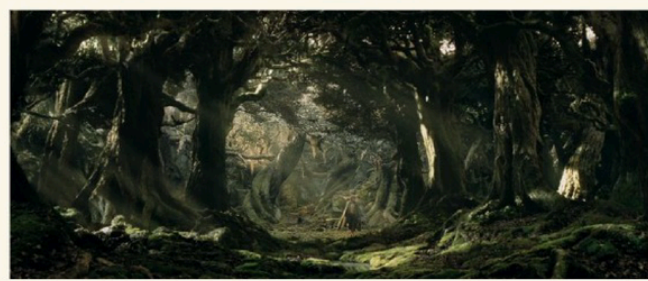
PERFORMANCE: DANCE FOR THE ORCS

Role: Prop Maker & Conceptual Set Designer



PERFORMANCE: DANCE FOR THE ORCS

Role: Prop Maker & Conceptual Set Designer



THEATRE: SENSE AND SENSIBILITY, BARNFIELD THEATRE, EXETER

Role: Associate Designer



THEATRE: SENSE AND SENSIBILITY, BARNFIELD THEATRE, EXETER

Role: Associate Designer



THEATRE: ALL GROWED UP, LYRIC THEATRE BELFAST

Role: Assistant Designer



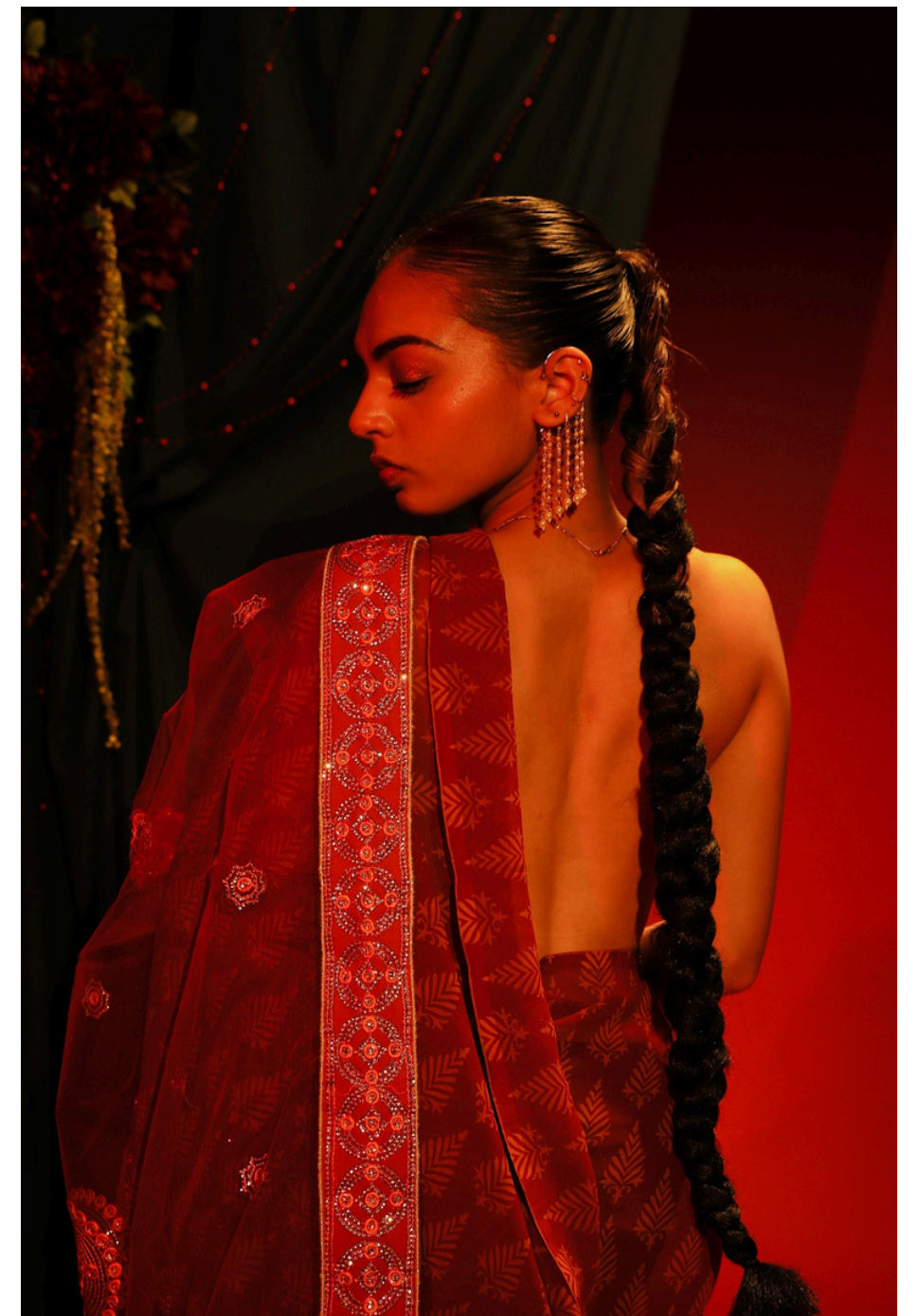
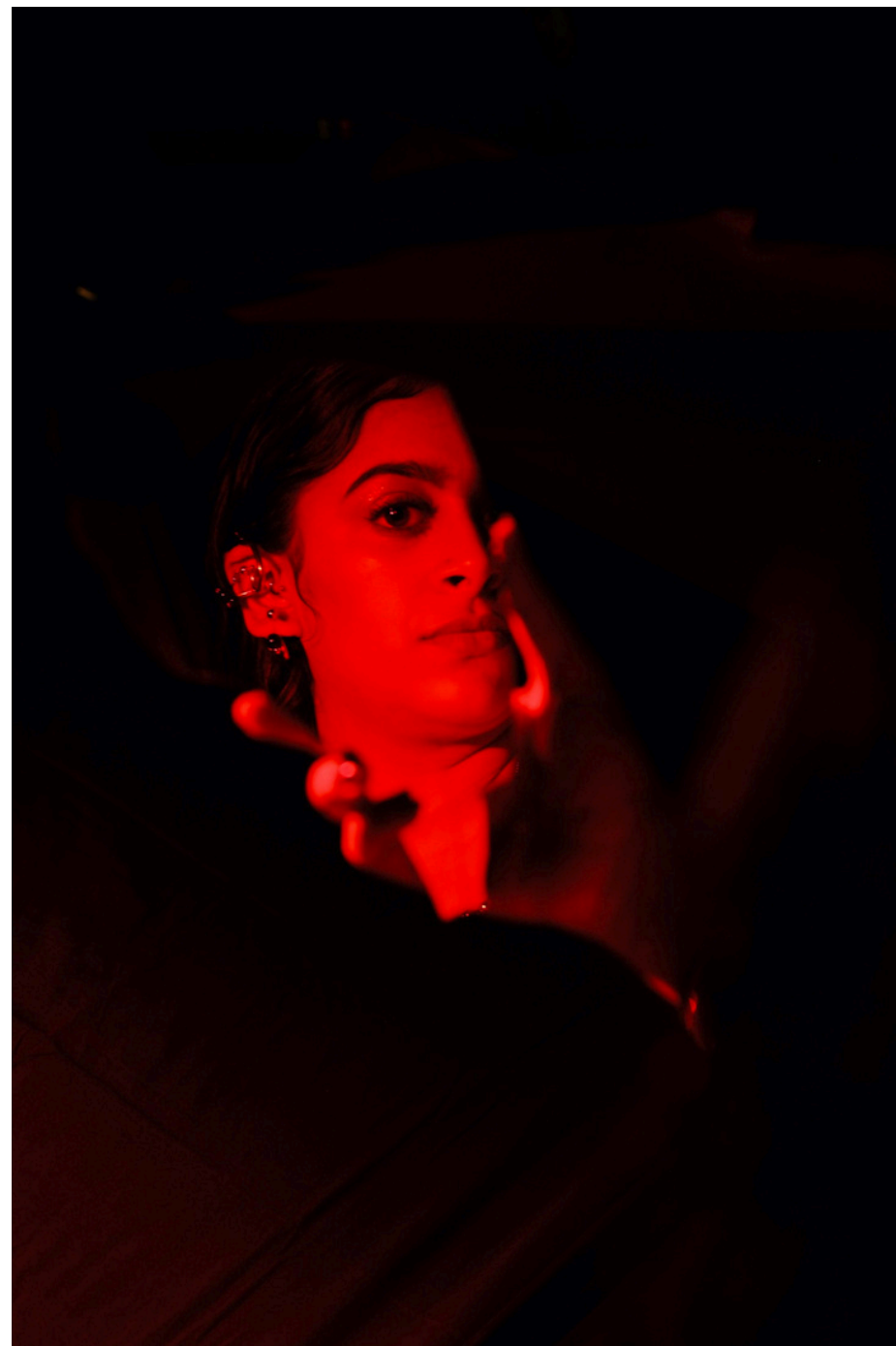
THEATRE: SCENES FROM LOST MOTHERS, CLEAN BREAK THEATRE

Role: Assistant Designer



FASHION SHOOT: DRAPED IN DOMINANCE

Role: Set designer



FASHION SHOOT: DRAPED IN DOMINANCE

Role: Set designer

Set inspo



Lighting inspo



- lighting very hyper realistic studio style
- in style of colonial portraits
- very bold not overly warm lighting

Set sketch



- Set in style of colonial portraits
- Theatrical draped curtain style with red spraypainted flowers to mirror the symbolism in colonial map
- Mirrors reflecting the subject's image symbolising identity, surveillance, and the way women were forced to view themselves through the colonial gaze.
- Reading old newspaper (can be photoshopped to a relevant headline to do with breast-tax)
- Old style chair next to wicker stool (Amina has) where models stand/sit topless in saree
- The visual imagery created through the colonial style set juxtaposed with the topless women in sarees is a sign of protest

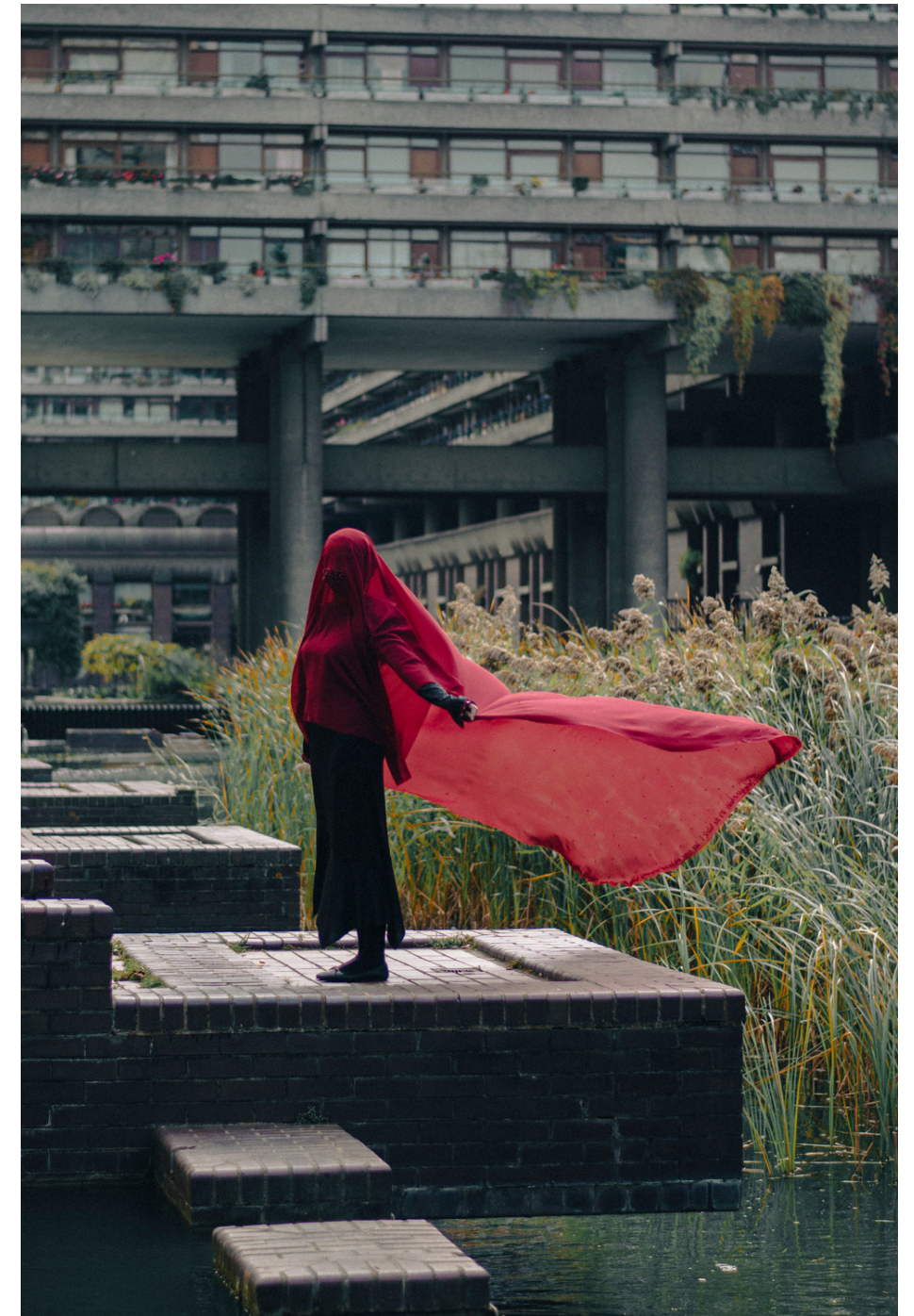
Items needed

- 2 x backdrop stands with backdrop pegs and sandbags (uni)
- Black backdrop roll (uni)
- Old wooden chair
- Wicker stool (Amina has)
- Fake flowers spray painted in deep red (£10 -£15) (spray paint free)
- Red fabric (Amina has)
- Green fabric (£8-£10)
- Mirror (£5)
- Old newspaper (Amina has)
- Glass vase (Amina has)



ARTWORK: I AM THE CONTEXT

Role: Creative direction & embroidered veil



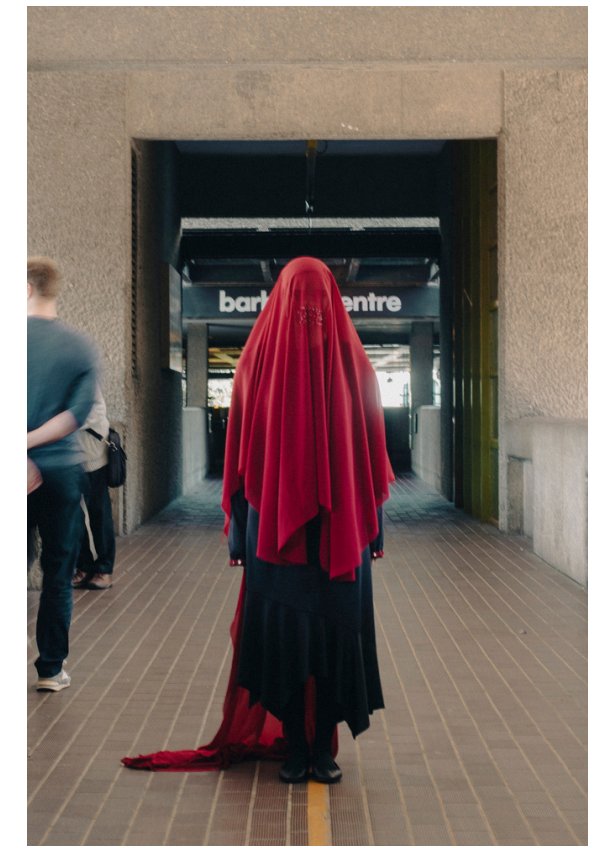
ARTWORK: I AM THE CONTEXT

Role: Creative direction & embroidered veil



ARTWORK: I AM THE CONTEXT

Role: Creative direction & embroidered veil



FASHION SHOOT: TRADITION & DEFIANCE

Role: Set Designer



FASHION SHOOT: TRADITION & DEFIANCE

Role: Set Designer



FASHION SHOOT: TRADITION & DEFIANCE

Role: Set Designer

Description:

- Large pale cream sheet safety pinned in certain areas to create draped look
- White or blue or pink lace bows attached to areas that have been safety pinned
- Lace in subtle colours not to stand out too much.
- Newspaper and red rose prop



Object/materials list

- 150 x 4 meter cream fabric x2
- Light blue/white/light pink lace
- Newspaper (Amina)
- safety pins (Amina)
- Red Rose (Amina)

Equipment

- Backdrop pegs x8
- Backdrop stand x1
- Lighting equipment



Description:

- Large deep red backdrop sheet
- Red roses hanging down from top with invisible string
- Red rug (optional)



Object/materials list

- Dark red backdrop/fabric
- Bunch of dark red roses (Amina)
- Fishing wire (invisible string) (Amina)
- Needle (Amina)
- Pegs (Amina)
- Rug (optional)

Equipment

- Backdrop pegs x8
- Backdrop stand x1
- Lighting equipment

